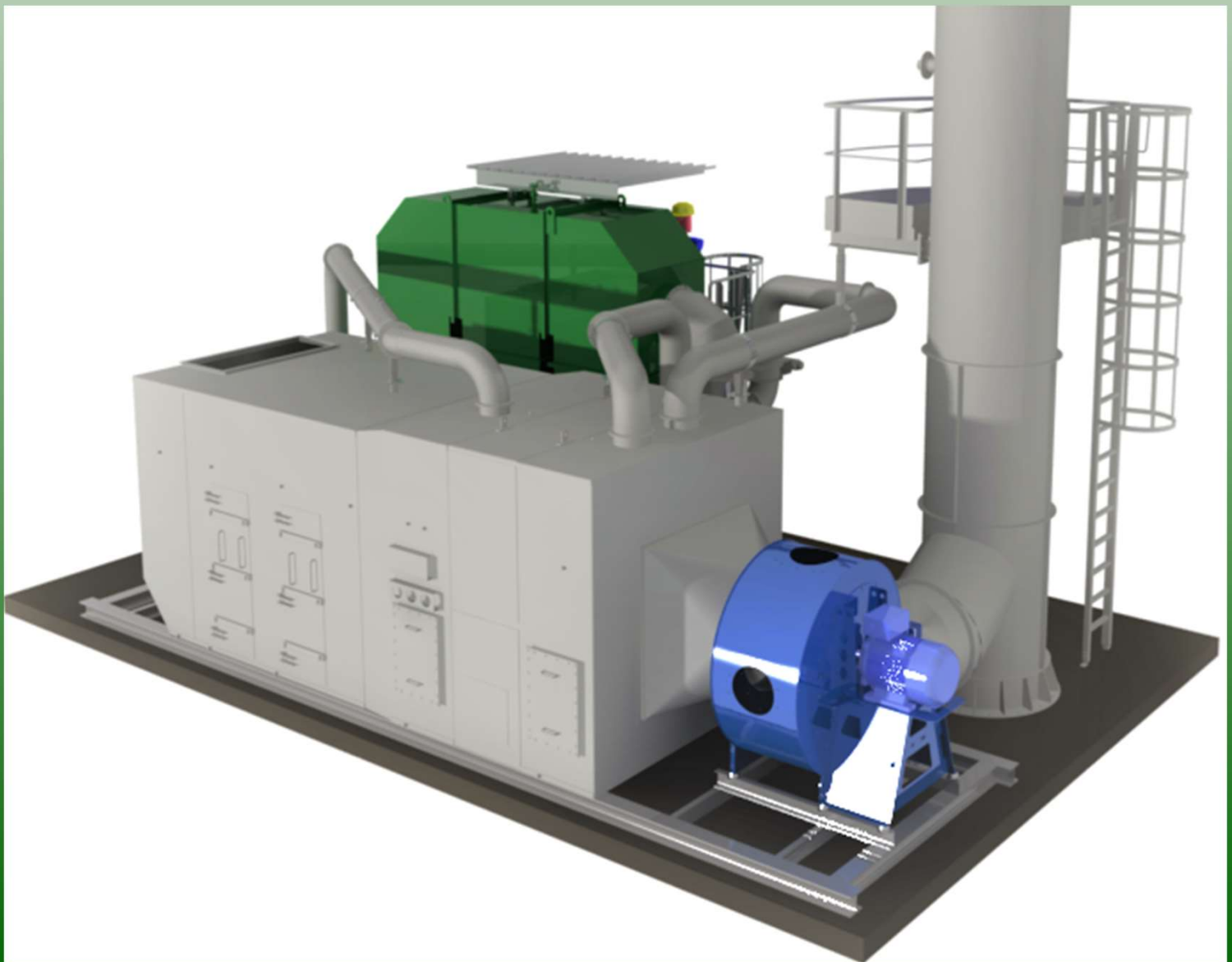
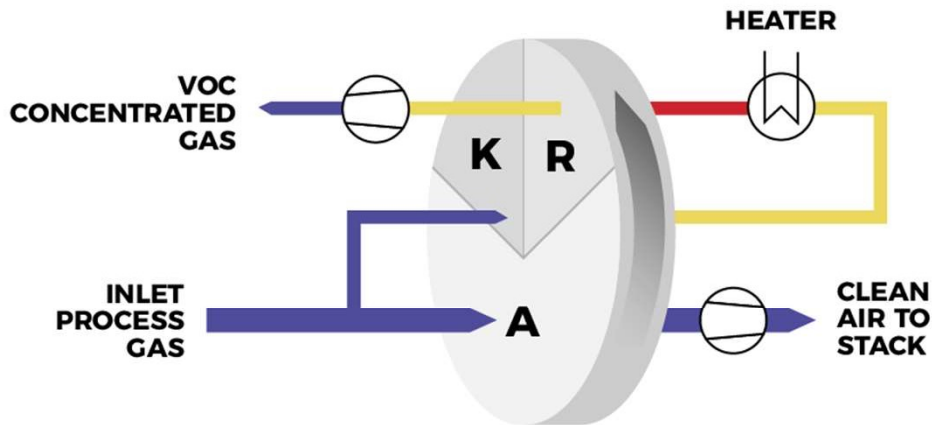


VOC ROTOR-CONCENTRATOR

BAT for low concentration of pollutants and large gas flow rate





ZEOLITE BASED ROTOR-CONCENTRATOR

- A - ADSORPTION
- K - COOLING
- R - DESORPTION

VOC ROTOR-CONCENTRATORS are typically installed in case of low concentration of pollutants and large gas flow rate.



The **volatile organic compounds VOC** contained in the laden air flow are concentrated by adsorption in a zeolite-based rotor-concentrator. The cleaned air flow is delivered directly to the exhaust stack. The pollutants concentrated in the rotor-concentrator are desorbed and finally treated by a thermal oxidizer with reduced size.

